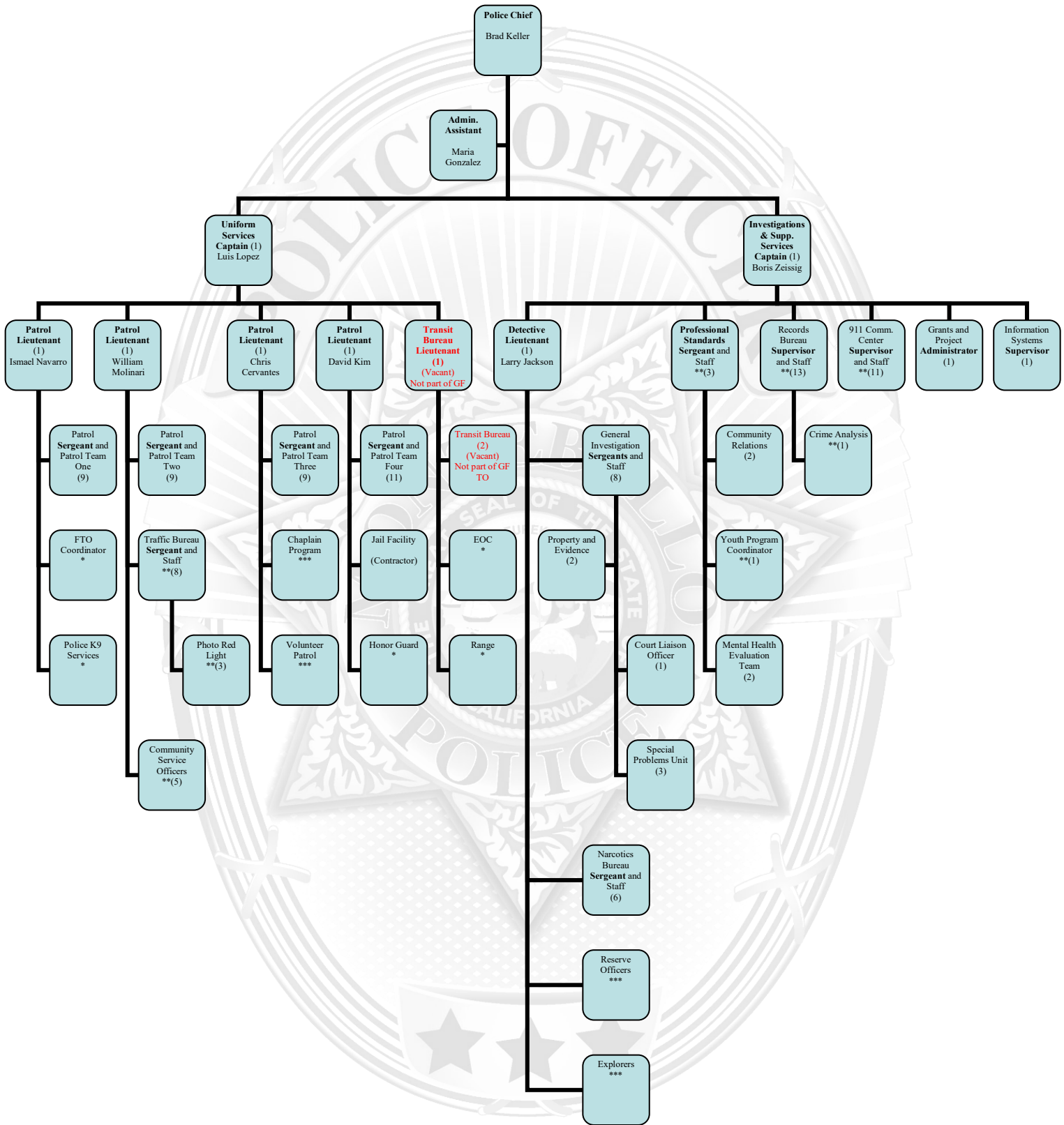


MONTEBELLO POLICE DEPARTMENT TABLE OF ORGANIZATION



- *Collateral Assignment, does not add to FT or FTE TO (FT=102) (FTEs=7.7)
- **Includes Part Time Staff
- ***Volunteer Positions
- > All position denoted in this chart are funded and not actual
- > Transit Bureau is funded out of Transit Bureau Security